



*Pinnacle Custom Home Builders, Inc.*

## KING'S BRIDGE ESTATES

- 2 story home on beautiful corner lot
- Approx. 2800 sqft
- 4 Bedrooms, 2.5 baths
- 3 Car side load garage
- 9' ceilings on first floor
- Full basement with 8'10" basement walls
- Ceramic floors in laundry, master bath, and hall bath
- Hardwood floors in foyer, kitchen/dinette, powder room, and family room
- White colonist doors and trim
- Oak railings on stairs and second floor hall
- 1st floor den
- Master bedroom suite features luxury master bath with whirlpool tub, separate shower, double bowl vanity, and cathedral ceilings
- Kitchen features custom oak cabinets, and appliance package
- Large wrap around front porch w/ stone
- Partial stone on all sides of home
- Architectural shingles and shake siding
- Dual 90% high efficiency furnace, air conditioning and humidifier.
- Landscaping Package

### *The Alpine II*



*12608 Shenandoah Trail (lot 12)*

**\$465,901**

*Available for immediate delivery.*

**(815) 439-9700**

[www.customhomesbypinnacle.com](http://www.customhomesbypinnacle.com)

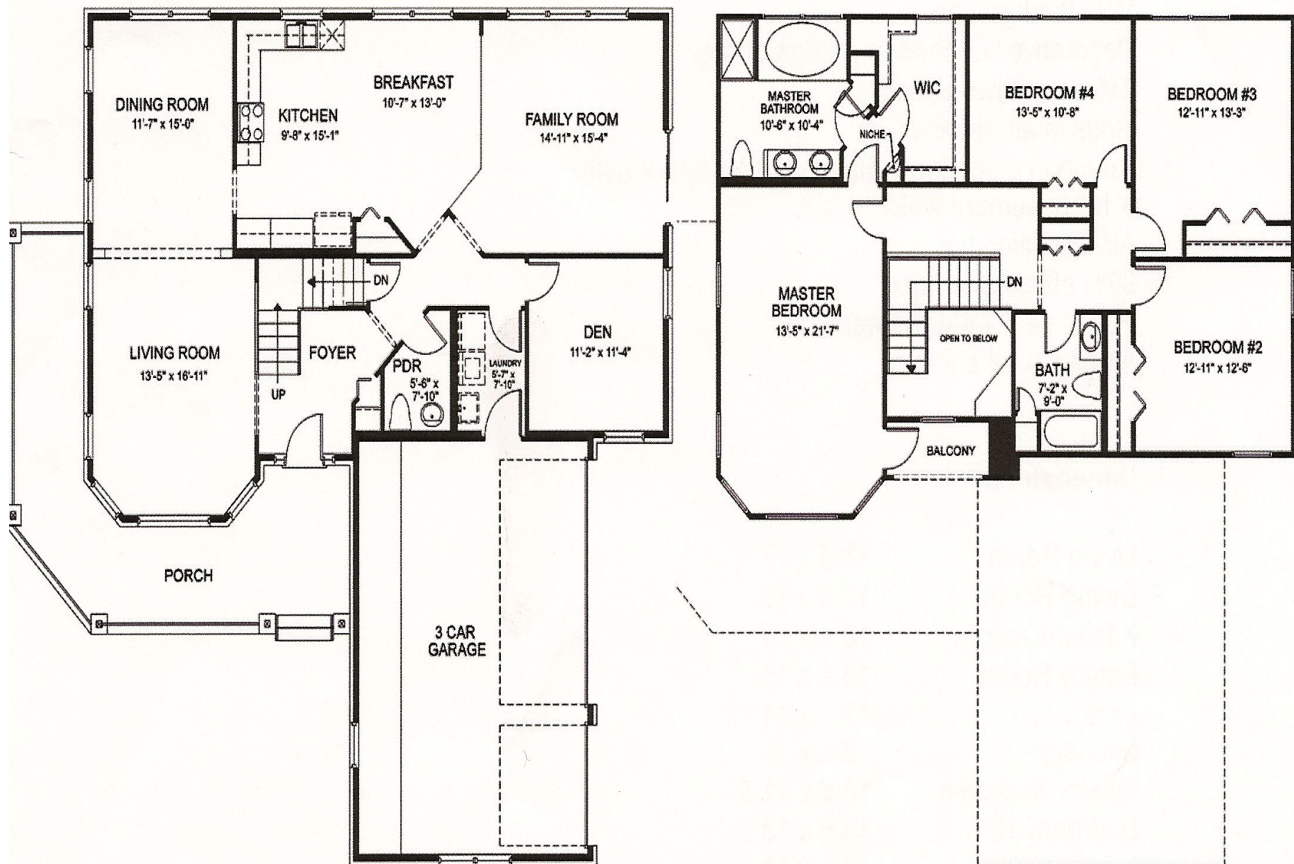
*All plans, prices and availability are subject to change without notice.  
Pictures and plans may be shown with optional features.*



*Pinnacle Custom Home Builders, Inc.*

## KING'S BRIDGE ESTATES

# The Alpine II



*Pinnacle*  
Custom Homes

All plans and specifications are subject to change without notice. Options available. See sales consultant for details.

